

KINGS A D V E N T U R E



VEHICLE RECOVERY
ELECTRIC WINCH
DOMIN8R SERIES

INSTRUCTIONS

SAFETY PRECAUTIONS

Warning! Observe safety precautions for personal safety and the safety of others. Improper equipment operation may cause personal injury and equipment damage. Read the following carefully before attempting to operate your winch and keep the instructions for future reference.

1. Dress Properly:

- Don't wear loose clothing or jewellery. They can be caught in moving parts.
- Wear leather gloves when handling winch rope.
Do not handle rope with bare hands as it can cause injuries.
- Non-skid footwear is recommended,
- Wear protective hair covering to contain long hair.

2. Keep a Safe Distance:

- Ensure that all persons stand well clear of winch rope and load during winch operation, 1.5 times the rope length recommended. If a rope breaks under load it can lash back and cause serious personal injury or death.
- Don't step over the rope.
- All visitors and onlookers should be kept away from the work area.
- Keep proper footing and balance at all times.

3. Don't Abuse the Cord:

- Never carry your winch by the cord or yank it to disconnect it from the receptacle.
- Keep cord from heat, oil and sharp edges.

4. Don't Overwork the winch:

- If the motor becomes uncomfortably hot to touch, stop and let it cool for 15 minutes.
- Don't maintain power to the winch if the motor stalls.
- Don't exceed maximum line pull ratings shown in tables. Shock loads must not exceed these ratings.

5. Avoid Unintentional Starting:

- Winch clutch should be disengaged when not in use and fully engaged when in use.

6. Check Damaged Parts:

- Before using, you should check your winch carefully. Any part that is damaged should be properly repaired or replaced by an authorized service centre.

7. Repair Your Winch:

- When repairing use only identical replacement parts or it may cause considerable danger for the user.

8. Respool the Cable:

- Leather gloves must be worn while respooling. To respool correctly, it is necessary to keep a slight load on the rope. Hold the rope with one hand and the remote control switch with the other. Start as far back and in the centre as you can. Keep at least 150kg on the rope as the winch is powered in. Winching on a flat surface is one method. Winching until all the cable except 1m is in.
- Disconnect the remote control switch and finish spooling in cable by rotating the drum by hand with clutch disengaged.
- On hidden winches, spool in cable under power but keep hands clear.

Warning: The use of any other accessory or attachment other than those recommended in the instruction manual may present a risk of personal injury.

WINCH OPERATION WARNINGS

Read the following carefully before attempting to operate your winch and keep the instructions for future reference.

- The uneven spooling of rope, while pulling a load, is not a problem, unless there is a rope pile up on one section of the drum which can damage the winch. If this happens reverse the winch to relieve the load and move your anchor point further to the centre of the vehicle. After the job is done you can unspool and rewind for a neat lay of the rope.
- Store the remote control switch inside your vehicle where it will not become damaged, inspect it before you plug it in.
- When ready to begin spooling in, plug in remote control switch with clutch disengaged, do not engage clutch with motor running.
- Never connect the hook back to the rope. This causes rope damage. Always use a sling of suitable strength.
- Observe your winch while winching, if possible while standing at a safe distance. Stop the winching process every metre or so to assure the rope is not pulling up in one corner. Jamming the rope can break your winch.
- Do not attach tow hooks to winch mounting apparatus. They must be attached to vehicle frame.
- The use of a snatch block will aid recovery operations by providing a doubling of the winch capacity and a halving of the winching speed, and the means to maintain a direct line pull to the centre of the fairlead. When using a double line pull loading during stationary winching, the winch hook should be attached to the chassis of the vehicle. It is recommended to use a snatch block double line pull when loads exceed 70% of the winch rating.
- Ensure rated bow shackles are used in conjunction with an approved tree trunk protector to provide a safe anchor point.
- When extending winch rope, ensure that at least 8 wraps of rope remain on drum at all times. Failure to do this could result in the rope parting from the drum under load. Serious personal injury or property damage may result.
- Since the greatest pulling power is achieved on the innermost layer of your winch, it is desirable to pull off as much line as you can for heavy pulls (you must leave at least 8 wraps minimum on the drum). If this is not practical use a snatch block and double line arrangement.
- Draping a heavy blanket or similar object over the extended winch rope is recommended as it helps dampen any back lash should a failure occur.
- Neat, tight spooling avoids rope binding, which is caused when a load is applied and the rope is pinched between the others. If this happens, alternatively power the winch in and out. Do not attempt to work a bound rope under load, free by hand when unloaded.
- Apply blocks to wheels when vehicles are on an incline.

WINCH OPERATION WARNINGS (cont.)

Battery:

- Be sure that the battery is in good condition. Avoid contact with battery acid or other contaminants.
- Always wear eye protection when working around a battery.
- Have the engine running when using the winch, to avoid flattening the battery. Use a minimum 650CCA battery.

Winch Rope:

- Be sure that the rope is in good condition and is attached properly. Check rope for wear or damage after each use. If worn or damaged it must be replaced.
- Do not use the winch if rope is frayed or damaged.
- The life of the rope is directly related to the use and care it receives. It must be wound on to the drum under a load at approx. (150kg) or the outer wraps will draw into the inner wraps and severely damage the rope during winching. The first winch use should be a familiarization run while in a relaxed, non-recovery situation. Spool out the rope until 8 wraps left on the drum, then rewind the rope on to the drum under a load of (150kg) or more. This will slightly tension and stretch the new rope and create a tight rope wrap around the drum. Failure to do so may result in rope damage and reduced rope life.
- When the rope is replaced, be sure to apply Loctite, or an equal compound, to the rope clamp thread. Tighten the clamp screw properly but do not over tighten. The Loctite will help prevent loosening of the screw in arduous conditions.
- Inspect the rope after each use. If the rope becomes worn or damaged it must be replaced.

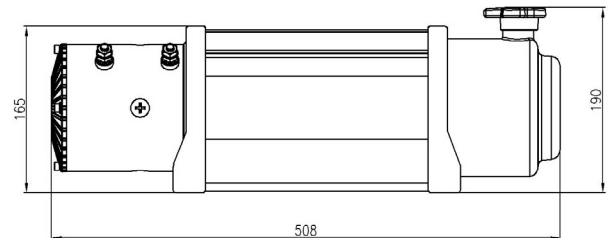
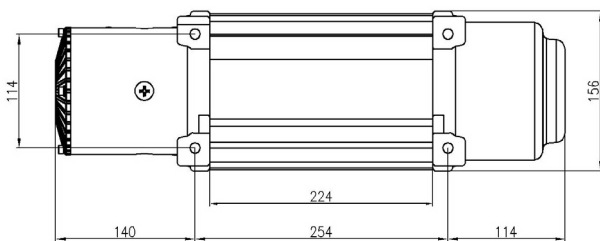
Loctite 7471 Primer and 222 Thread locker are recommended.

- DO NOT attempt to exceed the pulling limits of this winch.
- DO NOT drive your vehicle to assist the winch in any way. Vehicle movement in combination with winch operation may overload the rope, the winch itself or cause damaging shock loads.
- Shock loads when winching are dangerous! A shock load occurs when an increased force is suddenly applied to the rope. A vehicle rolling back on a slack rope may induce a damaging shock load.
- The winches shown in this manual are solely for vehicle and boat mounted, non-industrial applications.
- Do not use winch in hoisting or lifting applications.
- Do not use the winch to lift, support or otherwise transport people.

INSTALLATION

MOUNTING YOUR WINCH:

- The winch is to be mounted into a suitable steel mounting frame using the 4 point foot mounting system in either a horizontal or vertical plane.
- Before commencing installation ensure the mounting facility being used is capable of withstanding the winch's rated capacity.
- The fitment of winches and/or a frontal protection system may affect the triggering of SRS air bags. Check that the mounting system has been tested and approved for winch fitment in the airbag equipped vehicle.
- Winch mounting frames and/or Frontal Protection Systems are suggested to suit most popular vehicles. A thickness of 5mm is recommended for the mounting plate. Winch frames are packaged with detailed fitting instructions.
- The winch should be secured to the mounting with the 3/8"UNC x 1-1/4" Dacromet coated bolts and spring washers provided (at least grade 8.8).
- The fairlead is to be mounted so as to guide the rope onto the drum evenly.



LUBRICATION INSTALLATION

All moving parts in the winch are lubricated with high temperature lithium grease at the time of assembly. Under normal conditions factory lubrication will suffice.

ROPE INSTALLATION

Unwind the new rope by rolling it along the ground, to prevent kinking. Remove old rope and observe the manner in which it is attached to the drum flange.

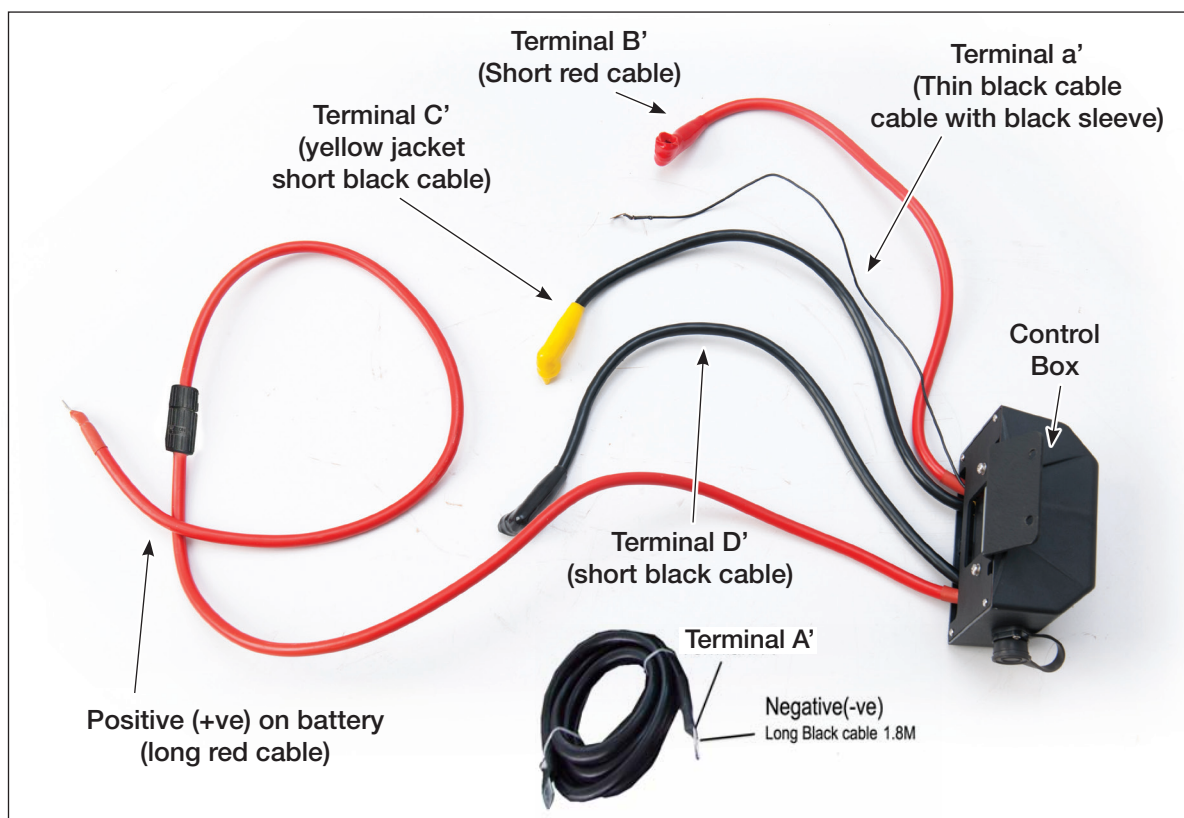
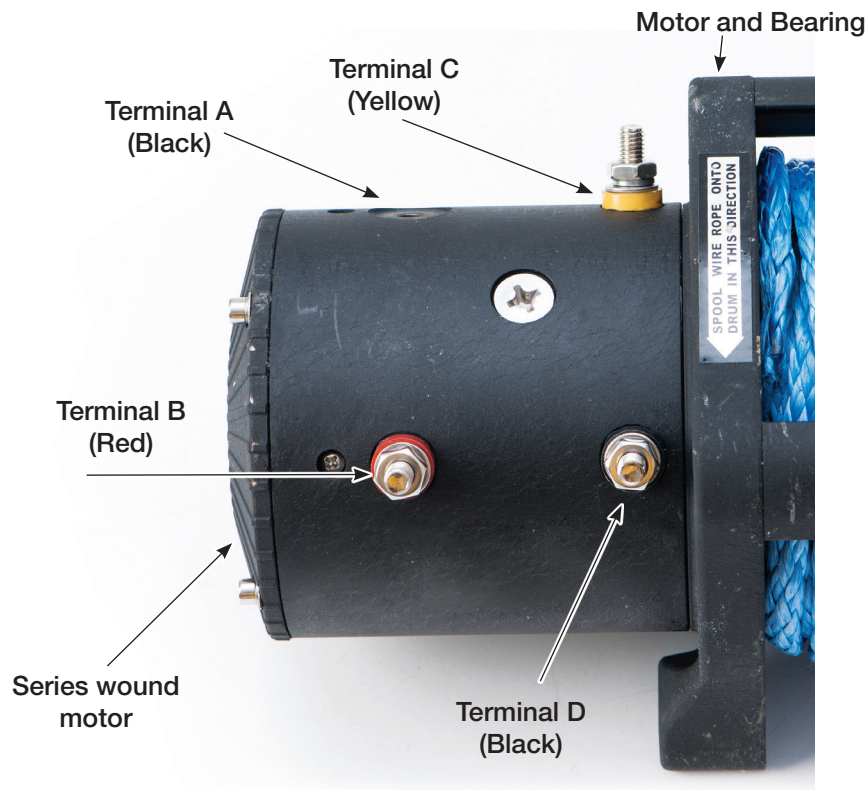
ELECTRICAL CONNECTION

Pay close attention to proper electrical cable connection as follows (refer to Diagram1)

- Short red cable (B') connecting to the red terminal (B) of the motor.
- Short black cable with yellow jacket (C') connecting to the yellow terminal (C) of the motor.
- Short black cable with black jacket (D') connecting to the black terminal (D) of the motor.
- Thin black cable(a') connecting to terminal (A) of the motor.
- Long black cable (1.8m), one terminal (A') connecting to the bottom terminal (A) of the motor, and the other terminal negative (-) connecting to negative (-) terminal of battery.
- Long red cable positive (+) connecting to positive (+) terminal of battery.

NOTE:

- Your battery must be kept in good condition.
- Be sure battery cables are not drawn taught across any surfaces, which could possibly damage them.
- Corrosion on electrical connections will reduce performance or may cause a short.
- Clean all connections especially in remote control switch and receptacle.
- In salty environments use a silicone sealer to protect from corrosion.
- Check electrical cables and connections after each use.



WINCH OPERATION

SUGGESTION:

The best way to get acquainted with how your winch operates is to make a few test runs before you actually need to use it. Plan your test in advance. Remember you can hear your winch as well as you can see it operate.

Get to recognize the sound of a light steady pull, a heavy pull, and sounds caused by load jerking or shifting. Soon you will gain confidence in operating your winch and its use will become second nature to you.

CONTROL BOX

Ensure the control box components are cleaned inside after exposure to mud and dirty water.

WINCH MAINTENANCE

We recommend at least once a month to operate your winch.

If operating your winch in an environment where it may get wet, we recommend that you re-run your winch at the end of the day.

The Domin8r X motor has twin lip seals which are very efficient at preventing water ingress into the motor but are not guaranteed to be 100% waterproof. Water is unlikely to damage the motor at the point of use but will over time if the winch is not properly maintained.



ENGAGED



**FREE
SPOOL**

OPERATING:

- Ensure the vehicle is secure by applying the parking brake or chocking the wheels
- Pull out the winch rope the desired length and connect to an anchor point.
- Disengaging the winch clutch allows rapid uncoiling of the rope for hooking onto the load or anchor point.
- The shifter tab located on the gear housing of the winch operates the clutch as follows:
- To disengage the clutch, move the clutch shifter tab to the “FREESPOOL” position. Rope could be free spooled off the drum.
- To engage the clutch, move the clutch shifter tab into the “ENGAGED” position. The winch is now ready for pulling.
- Recheck all cable rigging before proceeding.
- Plug in the winch hand control. It is recommended that the winching operation takes place from the driver’s position to ensure safe operation.
- To commence winching operation, start vehicle engine, select neutral in transmission, maintain engine speed at idle.
- Operate the hand control or the wireless remote control until the vehicle has been retrieved.
- Regularly check the winch to ensure rope is winding onto the drum evenly.
- Always use a winch cable blanket to minimise rope recoil.

NOTE:

- Never winch with your vehicle in gear or in park, which would damage your vehicle’s transmission.
- Never wrap the rope around the object and hook onto the rope itself. This can cause damage to the object being pulled, and kink or fray the rope.
- Keep hands, clothing, hair and jewellery clear of the drum area and rope when winching.
- Never use the winch if the rope is frayed, kinked or damaged.
- Never allow anyone to stand near the rope or in line with the rope behind the winch while it is under power. If the rope should slip or brake, it can suddenly whip back towards the winch, causing a hazard for anyone in the area. Always stand well to the side while winching.
- Don’t leave the switch plugged in when winch is not in use.

CHECK THE WINCH CAREFULLY AND THOROUGHLY BEFORE OPERATING!

MAINTENANCE

It is highly recommended that the winch be used regularly (once a month). Simply power the rope out 15m, free spool 5m and then power back in. This helps keep all components in good working condition so that the winch can be relied on when needed. Contact your authorized outlet for technical assistance and repairs.

SPARE PARTS:

A comprehensive range of spare parts is available. Please kindly contact the distributor or the local retailer.

WINCHING CAPACITY

- Pulling capacity is reduced as the incline increases.
- Winch is not intended as a load securing device.

NOTE:

The safety precautions and instructions discussed in this manual can’t cover all possible conditions and situations that may occur. It must be understood by the operator that common sense and caution are factors, which cannot be built into this product, but must be applied by the operator.



To use hand remote, plug in as shown. When you finish your recovery, remove from control box. Never leave your remotes in the control box when not in use.



To use wireless remote, un-plug hand piece and activate wireless mode as shown. When you finish your recovery, remove from control box. Never leave your remotes in the control box when not in use.



12000LBS FEATURES AND SPECIFICATIONS

Single line rated pull	12000LB (5440kg)
Motor	7.2hp/5.2kw.Series Wound
Main body	Sealed
Control	Remote switch, 12ft (3.7m) lead
Remote Control	Included
Gear train	3 Stage Planetary
Gear reduction ratio	218:1
Clutch	Keyway Cam
Braking Action	Automatic
Cable	9.5mm x 26m synthetic rope
Fairlead	Hawse fairlead
Battery	Recommended: 650CCA minimum for winching
Battery Leads	2 gauge,72"(1.83mm)
Finish	Black
Weight	27kg
Overall dimensions	(L*W*H) 20"x6.14"x7.48" (508x156x190mm)
Mounting Bolt Pattern	254x114.3mm

12000LBS LINE SPEED AND AMP DRAW (FIRST LAYER)

Line Pull	Lbs	NO LOAD	4000	6000	8000	10000	12000
	Kgs		1814	2720	3628	4540	5443
Line Speed	Ft/min	22.6	14.7	12.5	10.3	8.1	6.1
	m/min	6.89	4.5	3.8	3.14	2.47	1.85
Motor Current	amps	70	170	230	290	360	430

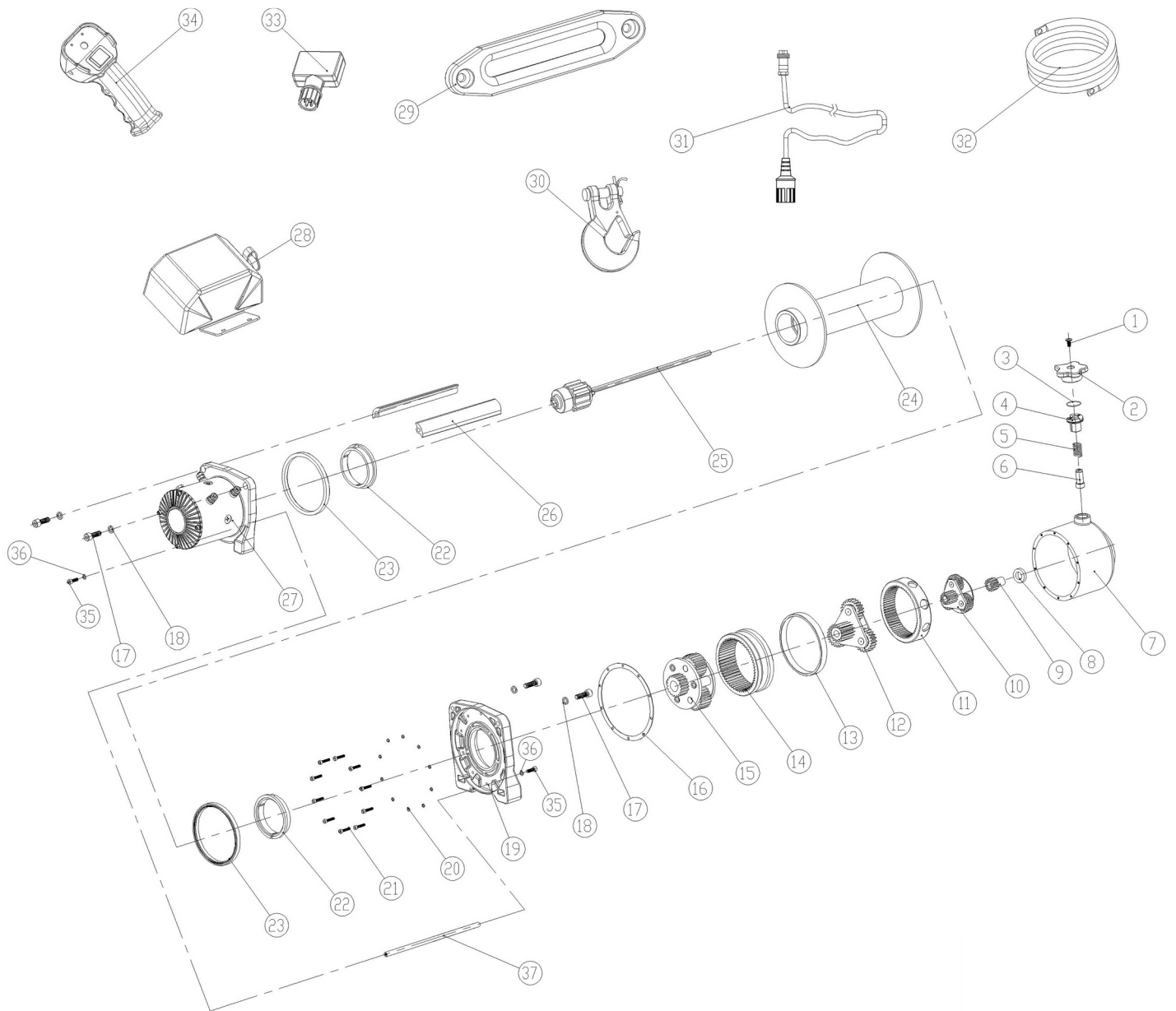
12000LBS LINE PULL AND CABLE CAPACITY

Layer of cable		1	2	3	4
Rated line pull per layer	Kgs	12000	9210	8030	6894
	Lbs	5440	4170	3640	3125
Cumulative Cable capacity	Ft	17	41	72	85.3
	M	5.1	12.4	21.7	26

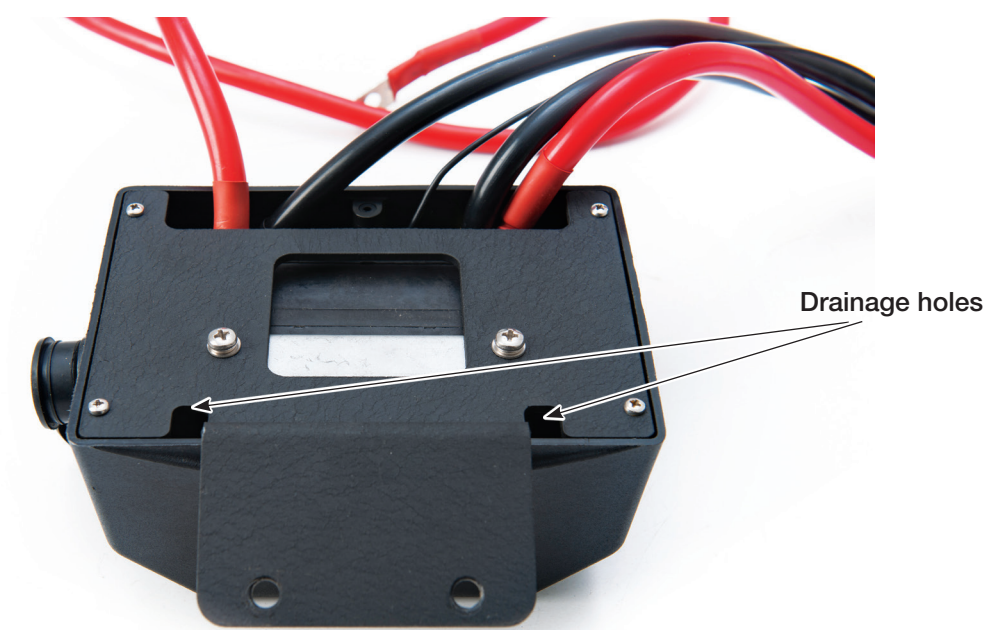
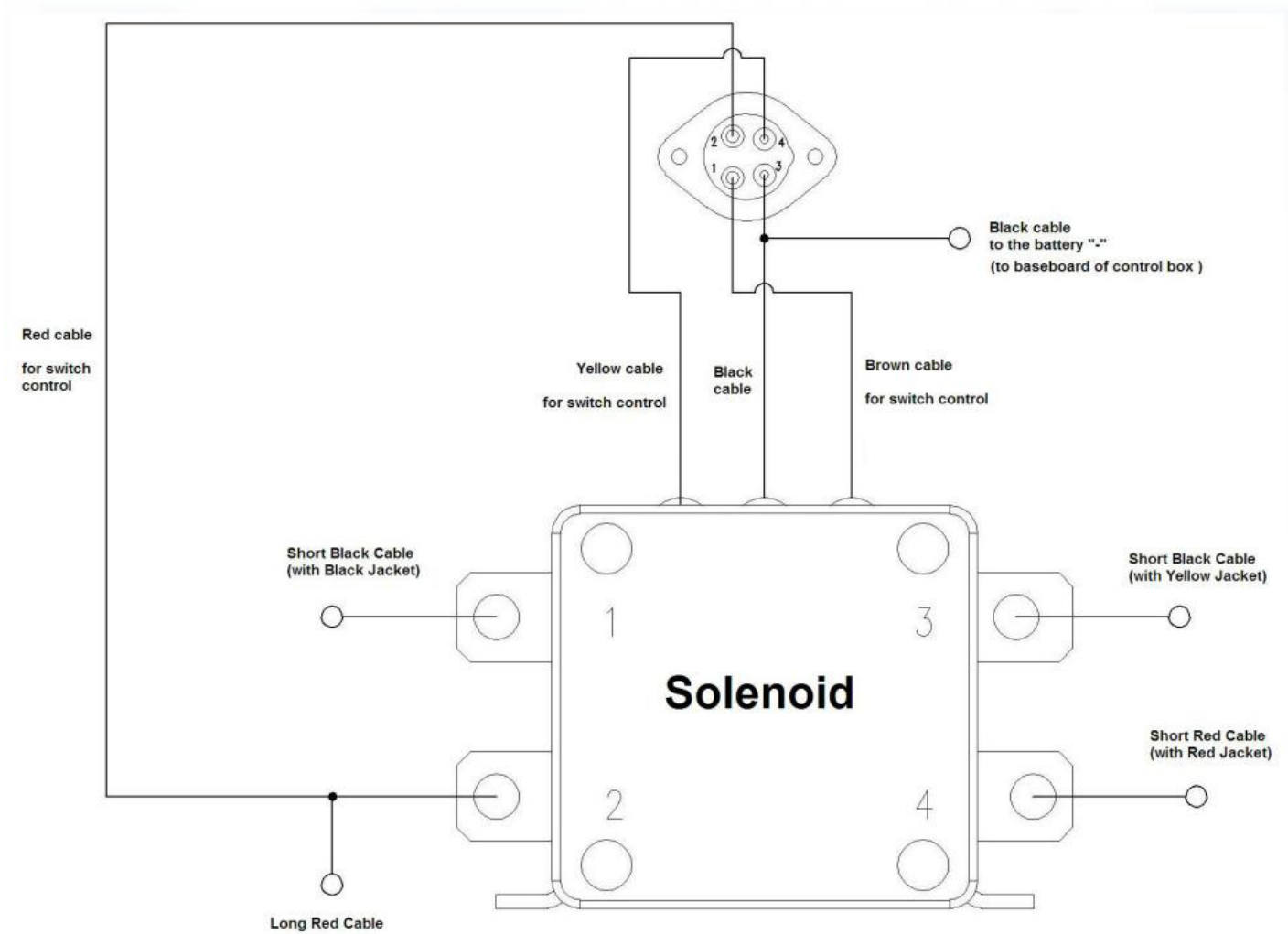
12000LBS WINCH PARTS LIST

Item Number	Part No.	Description	Qty
1	0107/08-01	Screw M5x12	1
2	0115/16-02	O-ring ϕ 9x1.5	1
3	0107/08-38	Clutch Handle	1
4	0107/08-24	O-ring ϕ 18x1	1
5	0107/08-04	Clutch Bush	1
6	0107/08-06	Spring	1
7	0107/08-07	Clutch shaft	1
8	0107/08-08	Gear Box	1
9	0107/08-09	Bushing	1
10	0107/08-10	Centre Gear	1
11	0107/08-11	3rd Planetary gear assy	1
12	0107/08-12	Clutch Gear	1
13	0107/08-13	2nd Planetary gear assy	1
14	0107/08-14	Gear box lining	1
15	0107/08-15	Inner gear	2
16	0107/08-16	1st Planetary gear assy	1
17	0107/08-17	Sealing washer	1
18	0107/08-18	Screw M8x25	4
19	107/08-19	Spring Washer	4
20	0107/08-20	Gear box bracket	1
21	0111/12-21	Spring Washer	10
22	0111/12-22	Screw M4x20	10
23	0111/12-23	Bearing bush	2
24	0107/08-50	Sealing washer	2
25	0107/08-26	Transmission shaft	1
26	0107/08-27	Drum assembly	1
27	0107/08-28	Braking assembly	1
28	0107/08-29	Tie bar	2
29	0107/08-30 X	Motor assembly	1
30	0107/08-31	Control box assembly	1
31	0107/08-32	Wireless remote receiver	1
32	0107/08-33	Fairlead	1
33	0107/08-34	Hook	1
34	0107/08-35	Control switch	1
35	0107/08-36	Wireless remote transmitter	1
36	0107/08-37	Battery negative (-) cord	1

12000LBS EXPLODED DIAGRAM



Solenoid and Drawing:



INSTRUCTION FOR CUT OFF SWITCH



- The cut off switch is to be turned off when the winch is not in use.
- If the winch is not periodically maintained the wiring could become loosened and cause difficulties.
- When in use it is normal for the motor to generate some heat. If it has not been used for some time check contacts and terminals for corrosion which will interfere with the current flow.
- When the winch has been in a moist environment, or stored for winter contacts may have become oxidized causing problems
- Do not operate the winch under salty, chemical and gaseous conditions for any length of time or the electrical parts may be affected
- When you are about to use the winch make sure the control switches are in the off position before connecting the cut off switch or cable.

THE FUNCTION OF THE CUT OFF SWITCH IS TO:

- To prevent drainage of the battery
- When not in use there will be no accidental operation of the winch

NOTE

- Do not use the cut off switch as a control switch
- When using the winch make sure the cable is firmly connected
- When not in use make sure the power is disconnected



WARRANTY REPAIRS CAN ONLY BE AUTHORISED BY 4WDSUPACENTRE (cont).

- Any modifications to the winch and or wiring will void your warranty
- The purchaser is responsible for the risk and cost of transportation, and in the case of goods being in sound working order, the owner may be charged a fee.
- The warranty for the winch includes all rights and remedies with respect to the consumer under the Trade Practices Act and similar state/territory laws.
- Failure to comply and follow instructions will void your warranty.

Warranty Conditions Include, but are not limited to the following:

- The winch **MUST** be used with a minimum 650 CCA (Cold Cranking Amps) battery. (Normally on battery specification label).
- The winch **MUST** have at least 1 complete layer equals at least 8 wraps of cable/rope on the drum at all times.
- The winch **MUST** be mounted to a suitable steel winch compatible bull bar only.
- The winch **MUST** be used as per the instruction manual.
- Do Not use the winch for industrial or commercial applications
- Do Not hook the winch cable /rope onto itself
- Do Not exceed the pulling limits of the winch
- Do Not shock load the winch
- Do Not overwork the winch, allow cooling during use, recommended duty cycle is 1 minute on, 1 minute off not in reverse or winching downhill.
- When winching downhill and using the winch brake do not exceed 45 seconds operation winching out before a 15 minute rest. Failure to do so can cause the drum to build up heat and damage the rope.

12 MONTH LIMITED WARRANTY



WARRANTY PERIOD:

Full 12 month warranty from date of purchase against all manufacturing defects.

WHAT DOES THE WARRANTY COVER?

- a. Under normal usage conditions, this warranty covers:
- b. Any defect in design or manufacture which results in the product failing to perform substantially as described in authorised advertising or literature.
- c. We will either repair or replace the product at our discretion providing that the fault is found to have been caused by a design or manufacturing defect and not misuse or tampering.

Our goods come with guarantees that cannot be excluded under the Australian Consumer Law. You are entitled to a replacement or refund for a major failure and for compensation for any other reasonably foreseeable loss or damage. You are also entitled to have the goods repaired or replaced if the goods fail to be of acceptable quality and the failure does not amount to a major failure. The benefits provided to you as the consumer by this warranty are in addition to other rights and remedies available to you under the law.

THE WARRANTY DOES NOT COVER:

- a. Any damage resulting from improper use
 - b. Faulty installation or modification made during installation
 - c. The cost of removing and reinstalling the product
 - d. Travel and /or other expenses due to customer's remote location
 - e. Transport charges and damage in transit. It is your responsibility to deliver and pick up your product, including any costs associated with the postage of your repair or replacement product. If you do freight your product we recommend that you insure against loss or damage.
 - f. Any loss directly or indirectly associated with the product failing to operate.
-

TO MAKE A CLAIM UNDER THIS WARRANTY PLEASE CALL

1800 88 39 64



OUTDOOR SUPACENTRE PTY LTD
2 Stanley St Silverwater NSW, 2128
PHONE: 1800 88 39 64
www.4wdsupacentre.com.au

